

JUL 22 2005

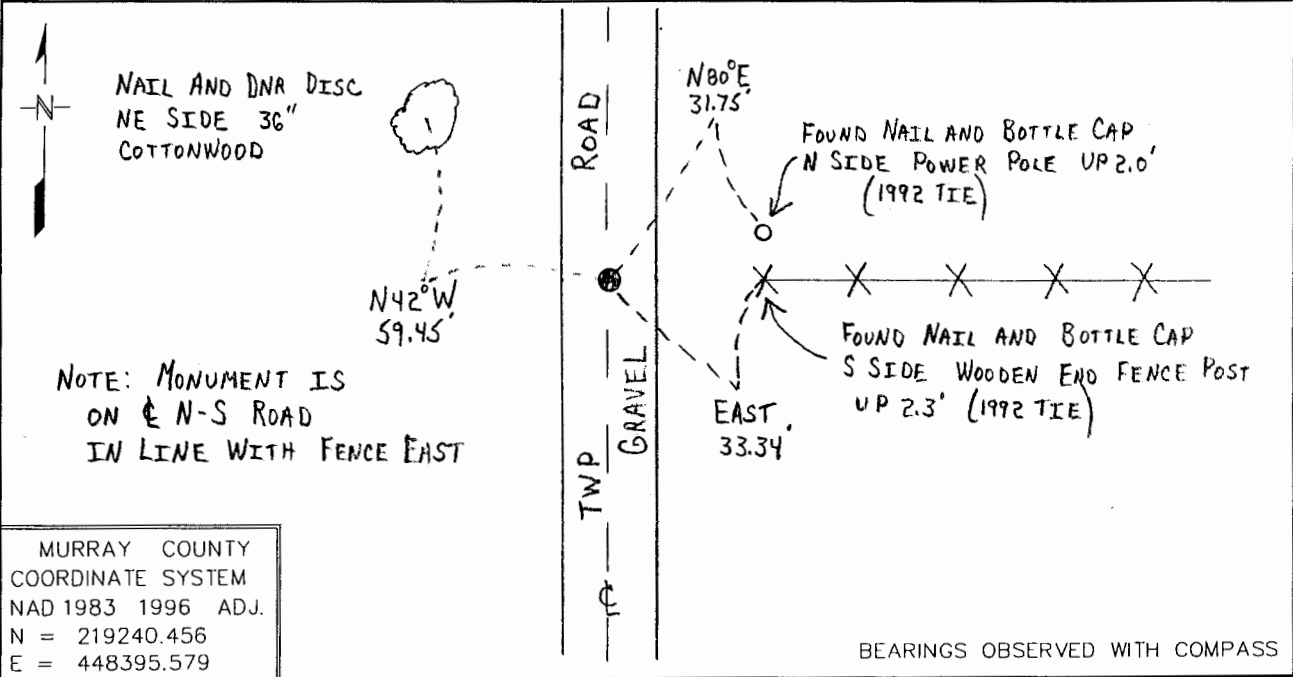
Index No. G-21

# CERTIFICATE OF LOCATION OF GOVERNMENT CORNER

EAST QUARTER Corner of Section 11 Township 108 N Range 43 W  
5th Principal Meridian, State of Minnesota, County of MURRAY

At the corner location shown on the sketch:

- On \_\_\_\_\_ found o \_\_\_\_\_  
DATE
- left monument as found,  lowered monument,  removed monument (explain)
- On 9/30/03 Placed a 3/4" BY 24" REBAR WITH A PLASTIC CAP STAMPED  
DATE  
"MN DNR LS 17003", DOWN 0.5'



Statement of evidence for this corner location is on back of this page.

WMA00165.00.00.01

I certify that this document was researched and prepared by me or under my direct supervision.

SIGNATURE Bruce W. Sheppard DATE 7-19-05 License Number 17003

Title:  Land Surveyor  Professional Engineer  County Surveyor  County Engineer

The DNR Division of Lands and Minerals contacted the following for survey information:

Minnesota Secretary of State's Office  
Murray County Recorder's Office  
Murray County Highway Engineer's Office  
Madsen Land Surveying, Inc. of Fairmont

- 1866 U.S. General Land Office notes, obtained from the Secretary of State's Office, show the corner marked with a post in a mound.
- 1957 January, a page in a DNR field notebook, shows corner but does not indicate what kind of monument was found or set. The corner is shown:  
on the center line of a north-south road  
in line with fences east and west  
on line between adjoining section corners  
2640.0 feet from the southeast corner of Section 11  
2651.5 feet from the northeast corner of Section 11
- 1957 June, a page in a DNR field notebook, shows that corner was used for a survey in the West Half of Section 12, but a description of what kind of monument was found or set is not given.
- 1963 September, a page in a DNR field notebook, shows that the location of corner was computed per the January 1957 survey. A description of what kind of monument was found or set is not given.
- 1965 October, a page in a DNR field notebook, states that a monument was NOT found at corner. The corner was re-established per the January 1957 survey and a railroad spike was set to mark its location and was found to be:  
5 feet, more or less, west of the centerline of road  
1 foot north of fence west  
in line with a fence east
- 1966 September, a page in a DNR field notebook, states that a railroad spike was found at corner per previous DNR survey.
- 1992 November, a page in a field notebook and a Certificate of Survey in Section 12, by John Madsen, LS 13593, obtained from Madsen Land Surveying, Inc., show that a railroad spike was found at corner, 4 inches deep. The spike was replaced with a ¾ inch outside diameter by 24 inch long iron pipe and took the following ties:  
spike in 24 inch tree, northwest, 56.50 feet  
bottle cap in power pole, northeast, 36.20 feet  
bottle cap in corner fence post, east, 37.77 feet  
4 feet west of the centerline of a north-south road  
in line with fence east  
2649.37 feet from the northwest corner of Section 12

1992 November, compiled government corner ties, obtained from the County Highway Engineer's Office, show that a railroad spike was found at corner, 4 inches below the surface. The railroad spike was replaced with a  $\frac{3}{4}$  inch by 24 inch iron pin and following ties were taken to it:

- spike in 24 inch tree, northwest, 56.50 feet
- bottle cap in power pole, northeast, 36.20 feet
- bottle cap in corner fence post, southeast, 37.70 feet

2003 September 30, the DNR Division of Lands and Minerals found the iron pipe set by John Madsen in 1992 for corner. Dug a 10 foot north-south by 8 foot east-west by 3 foot deep hole, with a backhoe, to clay subsoil the center being 3 feet west of the centerline of a north-south road and in line with a fence east. No evidence of a monument was found in the excavation. Searched for and found record ties as shown on the sketch of reference ties.

Analysis of the above information led the DNR Division of Lands and Minerals to conclude that found iron pipe, which was set in place of a found railroad spike that was set from assumed section corners north and south does NOT mark the location of the corner. Furthermore, a point on the center line of the north-south road and in line with the fence east marks the obliterated position of the corner.

A  $\frac{3}{4}$  inch by 24 inch rebar with a plastic cap stamped "MN DNR LS 17003" was set on the centerline of the north-south road and in line with the fence east and found it to be:

- 2649.38 feet from the northeast corner of Section 11
- 2639.51 feet from the southeast corner of Section 11
- 4.94 feet south and 1.32 feet east of the lost position for corner
- 0.33 of a foot south and 4.47 feet east of the found iron pipe

The found iron pipe was discarded.